

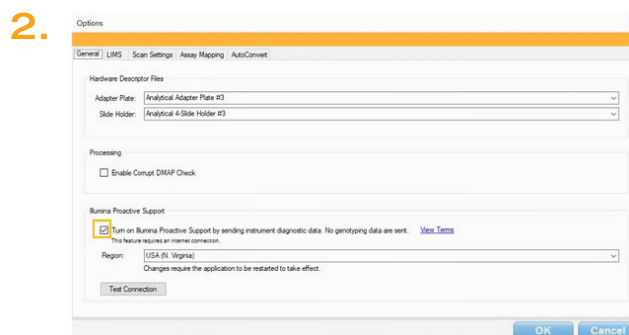
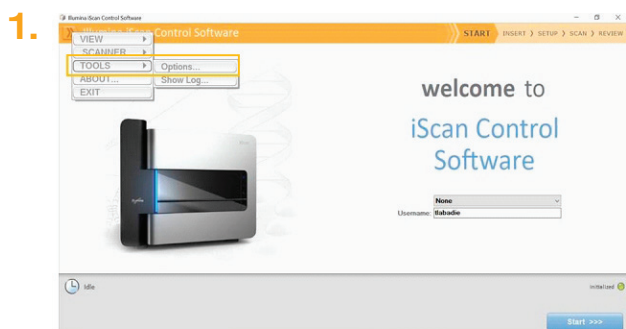
# Illumina iScan connectivity guide

## Easily connect your iScan System

To reduce unplanned downtime, minimize run failures and lost samples, plus resolve issues faster if and when they arise, simply follow the steps below.

### Follow these steps to get connected

- From the pull-down menu on the **Welcome** Screen, select **Tools > Options**
- Under the **General** tab, ensure the box in section **Illumina Proactive Support** is selected
- Click **OK**



For more information, contact your local field applications scientist or field service engineer.

www.illumina.com

**For Research Use Only. Not for use in diagnostic procedures.**